

THE CONTRACTOR SHALL VERIFY AND BE RESPONSIBLE FOR ALL DIMENSIONS. DO NOT SCALE THE DRAWING. ANY ERRORS OR OMISSIONS SHALL BE REFERRED TO STANTEC WITHOUT DELAY. NO USE FOR ANY PURPOSE OTHER THAN THAT AUTHORIZED BY STANTEC IS FORBIDDEN.

Plot Date: 08/09/2023 - 1:32pm
Drawing name: C:\pwworking\stntec\193805231_XSHO_Development\193805231_XSHO_Development.dwg
Sheet: 193805231_Traffic_Plan



DETOUR ROUTE 1

NOTES:

1. SEE SHEET T9.02 FOR TRAFFIC CONTROL LEGEND AND DETAILS.
2. DETOUR ROUTE 1 IS CONSIDERED THE PRIMARY DETOUR ROUTE FOR THE CONSTRUCTION OF ARBOR RIDGE PARKWAY. DETOUR ROUTE 2 SHALL BE IMPLEMENTED FOR CONSTRUCTING THE SOUTHERNMOST PORTION OF ARBOR RIDGE PARKWAY, AND FOR ARBOR RIDGE PARKWAY WEAR COURSE PAVING.
3. EXISTING GRAVEL ACCESS ROAD SHOWN ON DETOUR ROUTE 2 IS APPROXIMATE. CONTRACTOR TO REPAIR AND WIDEN ACCESS ROAD AS NEEDED TO MAINTAIN A MINIMUM 24' WIDE DRIVEABLE SURFACE, AND EXTEND ACCESS ROAD TO 103RD CIRCLE CULDESAC.
4. ALL TEMPORARY ACCESS ROADS SHALL BE DELINEATED WITH TYPE A WEIGHTED CHANNELIZERS (CANDLESTICKS) AT 25 FT MINIMUM SPACING.
5. SEE SHEET T9.02 FOR TEMPORARY ROAD TYPICAL SECTIONS.

TEMPLE DRIVE

CONSTRUCT TEMP BITUMINOUS ACCESS ROAD USING TYPICAL SECTION ON T9.02

PRIMARY DETOUR ROUTE

ARBOR RIDGE PKWY (TROY LN)

ARBOR RIDGE PKWY (101ST AVE)



733 Marquette Avenue, Suite 1000
Minneapolis, MN 55402
www.stantec.com

DATE: 2/15/2023 IIC NO. 5174

SIGNATURE: THER J. MCLEETE

PRINT NAME: THER J. MCLEETE

UNDER THE LAWS OF THE STATE OF MINNESOTA

AND THAT I AM A FULLY LICENSED PROFESSIONAL ENGINEER

HEREBY CERTIFY THAT THIS PLAN, SPECIFICATION, OR REPORT

WAS PREPARED BY ME OR UNDER MY DIRECT SUPERVISION

CITY OF MAPLE GROVE, MINNESOTA

EVANSWOOD STREET AND UTILITY IMPROVEMENTS PHASE 2 - CP 21-10

SAP 189-149-002

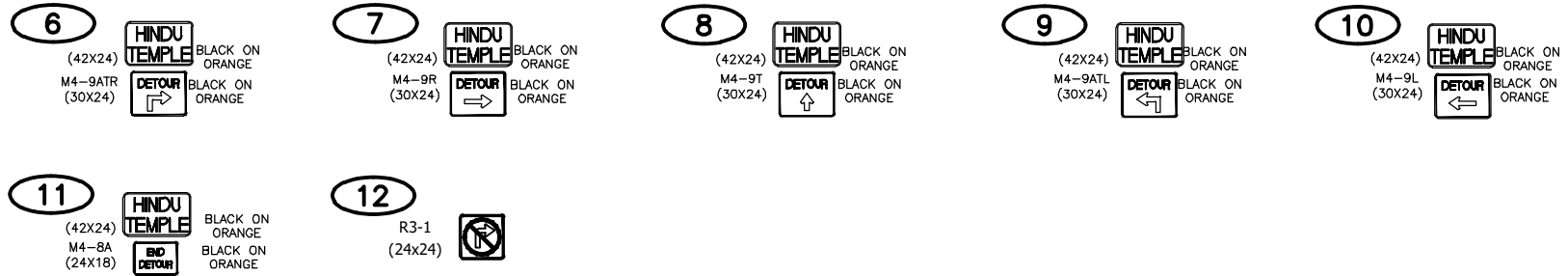
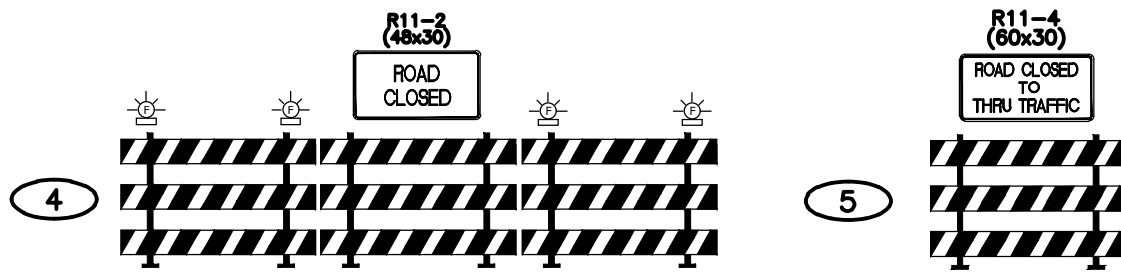
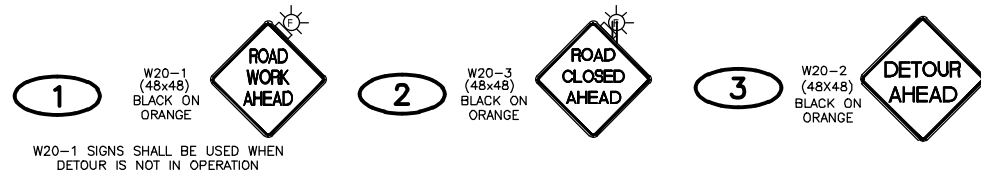
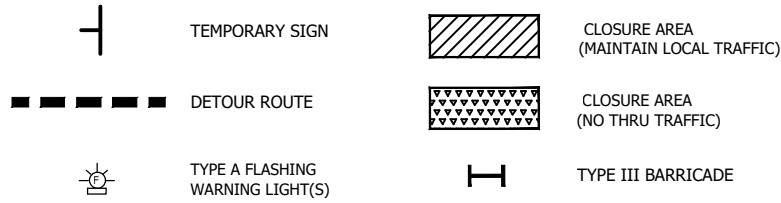
TRAFFIC CONTROL PLAN

NO. REVISION DATE

SURVEY	TNA
DRAWN	JLT/SJW/XWM
DESIGNED	JLT/ASB
CHECKED	KMS
APPROVED	TJM
PROJ. NO.	193805231
SHEET NUMBER	T9.01

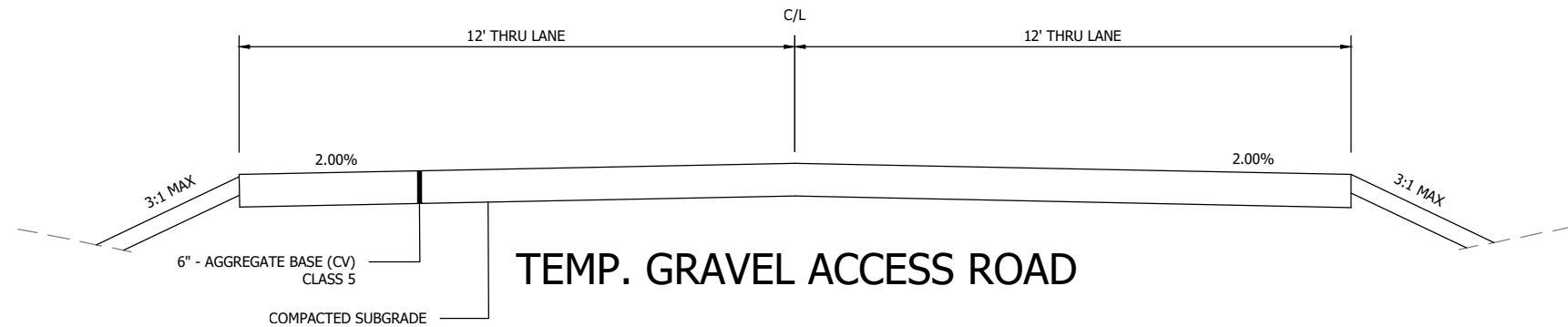
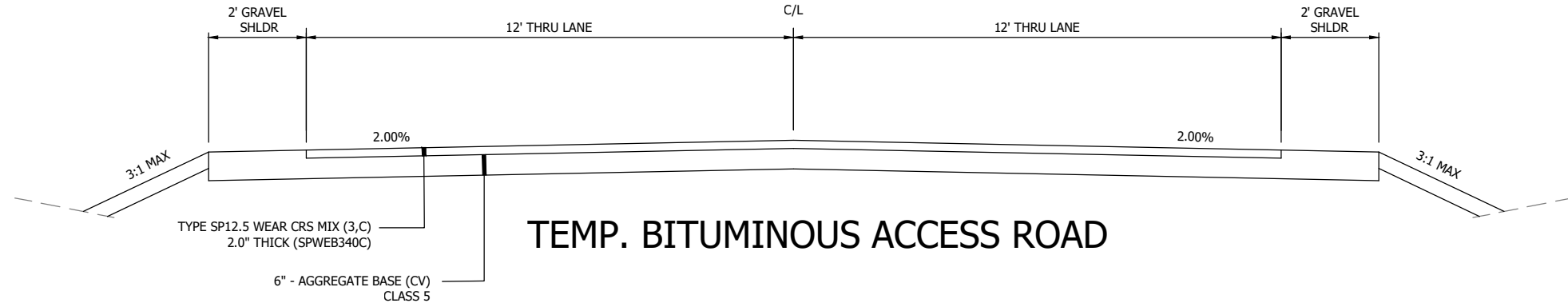
THE CONTRACTOR SHALL VERIFY AND BE RESPONSIBLE FOR ALL DIMENSIONS. DO NOT SCALE THE DRAWING. ANY ERRORS OR OMISSIONS SHALL BE REFERRED TO STANTEC WITHOUT DELAY. NO REPRODUCTION OR USE FOR ANY PURPOSE OTHER THAN THAT AUTHORIZED BY STANTEC IS FORBIDDEN.

LEGEND



- GENERAL NOTES -

- PAYMENT FOR TRAFFIC CONTROL IS INTENDED TO COVER SUCH DEVICES AS SHOWN IN THE FIELD MANUAL FOR TEMPORARY TRAFFIC CONTROL ZONE LAYOUTS.
- LAYOUT SHOWN IS AN EXAMPLE. CONTRACTOR MAY ADJUST SIGN PLACEMENT ACCORDING TO CONSTRUCTION STAGING AND HENNEPIN COUNTY PERMIT REQUIREMENTS.
- CUSTOM SIGNS SHALL BE SIZED TO ALLOW FOR 6-INCH LETTER SIZES.
- ALL TRAFFIC CONTROL DEVICES AND SIGNING SHALL CONFORM TO THE MnMUTCD, INCLUDING THE FIELD MANUAL FOR TEMPORARY TRAFFIC CONTROL ZONE LAYOUTS.
- THE CONTRACTOR SHALL FURNISH, INSTALL, AND MAINTAIN THE DEVICES IN THE TRAFFIC CONTROL PLAN UNLESS OTHERWISE NOTED.
- FIELD CONDITIONS MAY REQUIRE MODIFICATIONS OF THIS LAYOUT AS DEEMED NECESSARY BY THE ENGINEER.
- THE CONTRACTOR IS RESPONSIBLE FOR PROTECTING ANY WORK AREAS NEAR TRAFFIC IN ACCORDANCE WITH THE MnMUTCD.
- ALL LOCATIONS IN THE TRAFFIC CONTROL PLAN ARE APPROXIMATE. COORDINATE INSTALLATION WITH ENGINEER IN FIELD.
- INSTALLATION DETAILS OF SIGNS ON BARRICADES SHALL BE APPROVED BY THE ENGINEER PRIOR TO PLACEMENT.
- SIGNS SHALL BE MOUNTED ON POSTS DRIVEN INTO THE GROUND AT PROPER HEIGHT AND LATERAL OFFSET AS DETAILED IN THE MnMUTCD. SIGNS MAY ALSO BE MOUNTED ON PORTABLE SUPPORTS 5-7 FT. HIGH, AS APPROVED BY THE ENGINEER. WHEN SIGNS ARE REMOVED, THE SIGN POSTS SHALL BE REMOVED AS SOON AS POSSIBLE.
- ALL TRAFFIC CONTROL DEVICES, INCLUDING OVERHEAD SIGNS ON ROADS OPEN TO TRAFFIC THAT ARE NOT CONSISTENT WITH TRAFFIC OPERATIONS SHALL BE COVERED, REMOVED, OR REVISED AS DIRECTED BY THE ENGINEER.
- ALL WARNING SIGNS SHALL BE MADE OF DIAMOND GRADE ORANGE REFLECTIVE SHEETING (3984 SERIES) OR AN APPROVED SUBSTITUTE. ALL REGULATORY SIGNS SHALL BE V.I.P. DIAMOND GRADE (3990 SERIES) SHEETING.
- BARRICADES SHALL BE TYPE III AND SHALL BE CONSTRUCTED OF LIGHT MATERIAL. THE ACTUAL NUMBER OF BARRICADES AT EACH LOCATION REQUIRED MAY VARY DEPENDING ON THE SIZE OF THE BARRICADE USED.
- THE CONTRACTOR SHALL COORDINATE THE REMOVAL OF THE TEMPORARY SIGNS.
- ALL SIGNS PROVIDED BY THE CONTRACTOR FOR TRAFFIC CONTROL DURING CONSTRUCTION SHALL REMAIN THE PROPERTY OF THE CONTRACTOR AND SHALL BE REMOVED FROM THE JOB SITE WHEN THEY ARE NO LONGER NEEDED.
- ALL SIGN POSTS SHALL BE REMOVED AND THE SURROUNDING GROUND RETURNED TO ITS ORIGINAL CONDITION WHEN THEY ARE NO LONGER NEEDED.
- ACCESS TO THE HINDU TEMPLE MUST BE MAINTAINED AT ALL TIMES
- A MINIMUM OF A 24 FOOT WIDE BITUMINOUS MAT SHALL BE REQUIRED FOR ROADWAY ALONG THE PRIMARY DETOUR ROUTE.



733 Marquette Avenue, Suite 1000
 Minneapolis, MN 55412
 www.stantec.com

I HEREBY CERTIFY THAT THIS PLAN, SPECIFICATION, OR REPORT WAS PREPARED BY ME OR UNDER MY DIRECT SUPERVISION AND THAT I AM A FULLY LICENSED PROFESSIONAL ENGINEER UNDER THE LAWS OF THE STATE OF MINNESOTA.

PRINT NAME: TYLER J. MCLEETE
 SIGNATURE: [Signature]
 DATE: 2/15/2023 I.C. NO. 51774

CITY OF MAPLE GROVE, MINNESOTA
EVANSWOOD STREET AND UTILITY IMPROVEMENTS PHASE 2 - CP 21-10
 SAP 189-149-002
 TRAFFIC CONTROL PLAN

NO.	REVISION	DATE

SURVEY	TNA
DRAWN	JLT/SJW/XWM
DESIGNED	JLT/ASB
CHECKED	KMS
APPROVED	TJM
PROJ. NO.	193805231